



Penn Fields School Newsletter

Where every moment is a learning opportunity and that every moment matters

Boundary Way Penn Wolverhampton West Midlands WV4 4NT. Tel No (01902) 558640

Website: www.pennfields.com Email: office@pennfields.com

Issue 38 Friday 16th September 2022

SCHOOL CLOSED MONDAY 19th SEPTEMBER



Over the weekend it was announced that Monday 19th September is to be a Bank Holiday for the State Funeral for Her Majesty the Queen. Therefore, school will be closed on this day and re-open on Tuesday 20th September. We have been talking with the students in assemblies and class about this momentous time to help them understand. We will, of course, offer support to any child who is finding this difficult.

Penn Fields School Senior Leadership Team



Ms. Thackaberry
Head Teacher



Mr. Ellis
Deputy Head



Mrs. Payne
Deputy Head & DDSL



Ms. Dingley
KS1 & KS2 Phase Manager



Mr. Fletcher
KS3 & KS4 Phase Manager



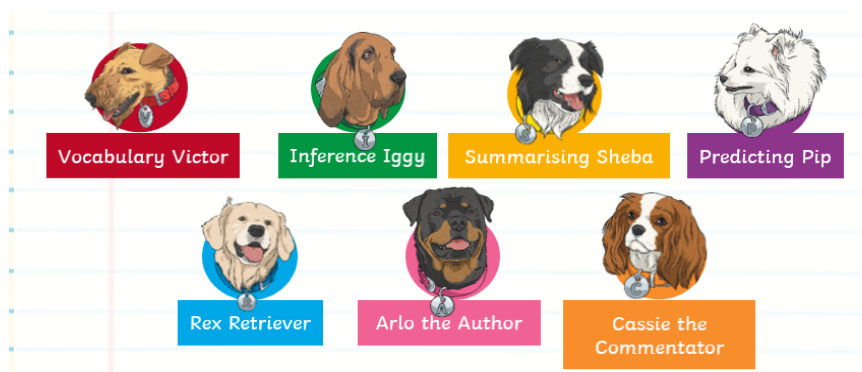
Ms. Callaghan
Welfare Manager - DSL



Mrs. Evans
Business Manager

Totally Pawsome!

This year, we are focusing on developing reading comprehension skills alongside students' word level development. In order to help us with this, we have called on the help of some furry friends: "The Pawsome Gang". Each week the students will have a dog that we focus upon. This week's dog was **Arlo the Author**, he also helps students with Word of the Week. See if your child can explain what the dog is for.



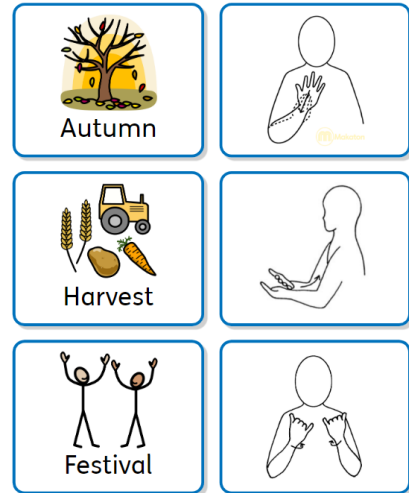
Word of the Week

Next weeks word of the week is 'Punctual' meaning on time. All Upper School students in their English lessons, will learn the meaning of the word and put it into sentences to check their understanding.

Makaton Corner

Research has shown that using signs and symbols actively encourages the development of speech and language skills. When using Makaton we always speak while we sign or use symbols to make the link between the sign/ symbol and the spoken word. Many children then drop the signs or symbols naturally at their own pace, as they develop speech.

Harvest Signing



Top tips for signing with your child:

Don't give up! It may take a while but it is worth it in the end.

Head to the Penn Fields website www.pennfields.com for past newsletters, where you can look back at all the Makaton Corners to date.

For more information on Makaton, please visit: <https://www.makaton.org/>

Harvest

Year 8 Class Teacher, Mrs Williams is presenting an Assembly on Monday about Harvest Festivals. She would like to launch a food collection to donate to 'The Good Shepherd' Food Bank. If you are able to contribute any in date, packaged or canned foods, please send them into school to 8W. The closing date for donations is Friday 7th October.



School menu week commencing 19th September:

Penn Fields week1 19th Sept, 10th Oct, 1st Nov, 21st Nov, 12th Dec

	Monday Mega Mondays	Tuesday Classic dish	Wednesday Roast Day	Thursday Chip Shop Day	Friday Classic dish
Main meal	Mac & Cheese with a crispy top	Grilled Chicken burger	Traditional Roast Chicken stuffing Yorkshire pudding & Gravy	Fish Finger Sandwich, MSC fish fingers served in a bap with salad	Bim's Homemade Beef Cottage pie with a cheesy mash top and extra gravy
Vegetarian option	Cheese & bean wrap	Grilled Veggie burger	Roast Quorn fillet & vegetarian gravy	Baked Veggie nuggets	Bim's Homemade Vegetarian Cottage pie
Vegetable choice	Peas & sweetcorn Baked Beans Salad	Baked beans Salad	Steamed broccoli & cauliflower	Mushy peas or garden peas & sweetcorn	Carrots and cabbage
Starchy choice	Herby diced potato cubes	Baked Potato wedges	Roast potatoes	Chunky chips	Smiley faces
Grab & go	Freshly made sandwich choice of Tuna mayo, Ham, Turkey, or Cheese with salad bar	Freshly made sandwich choice of Tuna mayo, Ham, Turkey, or Cheese with salad bar	Freshly made sandwich choice of Tuna mayo, Ham, Turkey, or Cheese with salad bar	Freshly made sandwich choice of Tuna mayo, Ham, Turkey or Cheese with salad bar	Freshly made Sandwich choice of Tuna mayo, Ham, Turkey or Cheese with salad bar
Jacket potato	Low sugar & salt baked beans, cheese or tuna mayo	Low sugar & salt baked beans, cheese, or tuna mayo	Low sugar & salt baked beans, cheese, or tuna mayo	Low sugar & salt baked beans, cheese, or tuna mayo	Low sugar & salt baked beans, cheese, or tuna mayo
Bread selection	Garlic bread	Bread stick	Crusty bread	Bread & butter	Crusty bread
Pudding	Ice cream Or Frozen smoothie Or Fresh fruit Or Yoghurt	Cookie Or Vegetarian sugar-free jelly Or Fresh fruit Or Yoghurt	Sponge & Custard Or Vegetarian sugar-free jelly Or Fresh fruit Or Yoghurt	Ice cream Or Vegetarian sugar-free jelly Or Fresh fruit Or Yoghurt	Chocolate Brownie Or Vegetarian sugar-free jelly Or Fresh fruit Or Yogurt
Gluten free option Must be pre-ordered	GF Pizza or GF Mac & cheese	GF beef burger in a GF bun	Traditional Roast Chicken no Yorkshire pudding/stuffing Jelly/fruit/smoothie	GF baked breaded pollock fillet	Bim's cottage pie with a cheesy mash
Dairy & Egg-free option Must be pre-ordered	Jelly/fruit/smoothie Vegan Pizza	Jelly/fruit/smoothie Vegan Pasty	Traditional Roast chicken no Yorkshire pudding with vegan gravy Jelly/fruit/smoothie	Jelly/fruit/smoothie Vegan Dippers	Jelly/fruit/smoothie Vegan bangers & smiley faces

Dates for your Diary

Autumn Term 2022

MONDAY 19 SEPTEMBER 2022—SCHOOL CLOSED

Term Time: Thursday 8 September 2022 to Friday 21 October 2022

Half Term: Monday 24 October 2022 to Friday 28 October 2022

Term Time: Monday 31 October 2022 to Friday 16 December 2022 – **School Closes Early**

Early Closure Times:

Lower School – 12.45

Upper School – 13.15

