



Penn Fields School Newsletter

Where every moment is a learning opportunity and that every moment matters

Boundary Way Penn Wolverhampton West Midlands WV4 4NT. Tel No (01902) 558640 Website: www.pennfields.com Email: office@pennfields.com

Issue 127 Friday 7th March 2025

Penn Fields Core Value - Co-operation

Our school core value this week has been co-operation. Nurture played the team game 'popcorn' where they worked together to keep the ping pong balls bouncing up and down on the parachute.



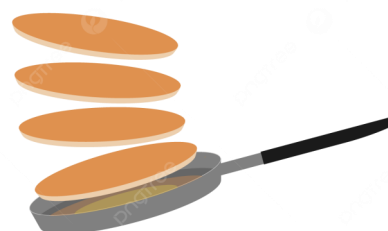
Learning Outside the Classroom

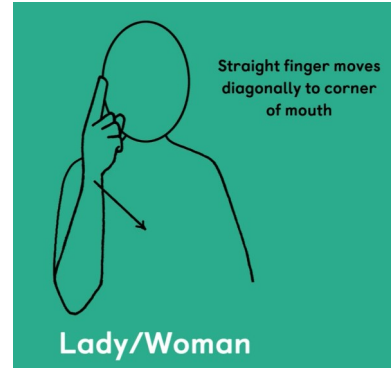
KS4 have been taking part in work experience at Kingswood. They used tools to clear out the pond, dig trenches and chop wood to make a toad habitat next to the pond. They used the woodwork skills they learnt at Kingswood to make bird houses at school.



Pancake Day

During RE Oak class have been learning about lent. On Shrove Tuesday students made a promise chain of things they wanted to do for lent that would have a positive impact on their lives, they also enjoyed delicious pancakes.





This weeks sign of the week is: **Lady / Woman.**

For more information about Makaton, videos and signs of the week please visit:

<https://www.makaton.org/>

Tuck Shop

Students from school council will be running a tuck shop. The tuck shop will sell healthy snacks for students to purchase, and will be open **every Tuesday** from 10.45am-11am in Creative Arts. Items are priced between 25p and 70p each. Tuck Shop is open to all Key Stages and money should be sent in a named envelope.



Café Sixth Form

Cafe Sixth form is open **every Friday** morning for KS3 and 4 students to purchase hot drinks such as tea and hot chocolate and paninis with a variety of fillings such as cheese and onion, cheese and ham and the weekly special.

Hot drinks cost £1.50 and Panini's cost £2.00.



Spring Term 2025

Spring Term Time:

Monday 24 February to Friday 11 April

Friday 11 April—School Closes Early

Early Closure Times: Lower School 12.45pm - Upper School 1.15pm

