



Penn Fields School Newsletter

Where every moment is a learning opportunity and that every moment matters

Boundary Way Penn Wolverhampton West Midlands WV4 4NT. Tel No (01902) 558640

Website: www.pennfields.com Email: office@pennfields.com

Issue 57 Friday 24 March 2023

Science Boffins

Scientist, 'Boffin John' visited Penn Fields School on Monday to demonstrate lots of exciting experiments. Students then took part in practical workshops 'Know your Newtons' and 'Fabulous Flames'. The day ended with a rocket launch on the school field.



Smart School Council

Last weeks SSC Question was:

Why do we have British Science Week every year?

The options were:

- So that we can learn extra science that week
- To celebrate science and technology in British schools
- To see how science links with other subjects across school
- To do fun and wacky experiments that week

The winning option with the most votes was:

To do fun and wacky experiments that week.



Music Day

The whole school took part in a music day on Wednesday 22nd March. Students took part in activities such as multisensory and African drumming workshops, making instruments, sound experiments and baking drum cakes. The theme was drumming, beat and rhythm and built on the students previous experience of Dhol Drumming and keeping a beat in the Autumn term.



Reading Corner



Picture books with QR codes.

You can digitally access picture books to read at home by scanning the QR code below. There will be a different book each week. This weeks book is 'The Night I Followed The Dog'.

Reading Winners

This weeks reading winners are: **William** from Nurture, **Kyra** from 9B and **Chloe S-C** from 6th Form. Excellent effort! Well done all!

Pawsome Gang

This weeks reading Domain Dog was **Victor Vocabulary**.

Word of the week was **Monstrous**.

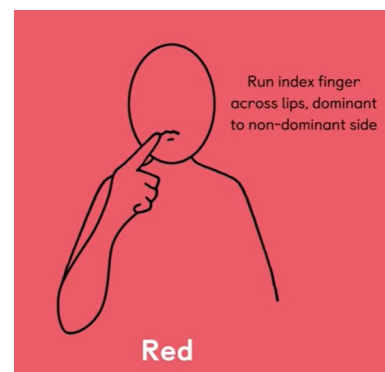
See if your child can tell you about these at home.



This weeks sign of the week is **Red**.

For more information about Makaton, videos and signs of the week please visit:

<https://www.makaton.org/>



Safeguarding Team

Anyone can be a victim of Domestic Abuse. If you are being subjected to Domestic Abuse there is help available. The Haven Wolverhampton is available 24/7 to support you and to help you plan for your safety.

Domestic Abuse Helpline (24/7): 08000 194 400

WhatsApp Helpline (Mon - Fri 9am - 5pm): 07719 558 183

Live Chat (Mon - Fri 9am - 5pm): www.havenrefuge.org.uk

Email (Mon - Fri 9am - 5pm): referralpoint@havenrefuge.org.uk

Dates for your Diary

Spring Term Time: Monday 27 February 2023 to Friday 31 March 2023

School Closes Early: Friday 31 March 2023 (Early closure / Lower School – 12.45 / Upper School – 13.15)

INSET Day: Monday 17th April - School Closed

Summer Term Time: Tuesday 18th April 2023 to Friday 26th May 2023

Half Term: Monday 29th May 2023 to Friday 2nd June 2023

Summer Term Time: Monday 5th June 2023 to Friday 21st July 2023 (Early closure)

