



Penn Fields School Newsletter

Where every moment is a learning opportunity and that every moment matters

Boundary Way Penn Wolverhampton West Midlands WV4 4NT. Tel No (01902) 558640 Website: www.pennfields.com Email: office@pennfields.com

Issue 123 Friday 31st 2025

Willow Class - Theme

This term for Theme, we are exploring Food. Each week we are learning about food through Traditional Tales and engaging in a food tasting session around different textures. This week we explored crunchy foods.



Elm Class—Science

Elm class have been exploring materials. We named different materials. This week we made a man using different materials.



Oak Class - Cooking

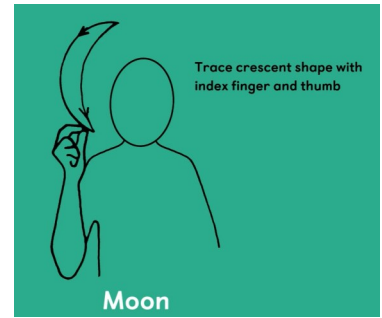
Oak class have been learning about food and where it comes from. This week Oak class made Italian pizza, including the dough.





This weeks sign of the week is: **Moon.**
 For more information about Makaton,
 videos and signs of the week please visit:

<https://www.makaton.org/>



Parking

Please support the parking procedures that have been put into place to keep our children safe during drop-off and collection times. A reminder please, that parents / carers who drop off and collect their child by car to take extra care when parking onsite. **Please only use the allocated parking bays on the bend as pictured. Only taxis and buses are to park outside the school entrance.**

This is to avoid double parking with the school transport and to help safeguard our children.



First Place Award Winners! Choo Choo!

Penn Fields school entered a competition to Design a Railway. The winning design will be built as a real life in the West Midlands in 2030. 5 students have been attending 'train club' since September, and on Thursday 23rd January 2025, they attended the award ceremony at Walsall Football Club. The judges loved their design, and Penn Fields students won first place in the category for Mixed ages and abilities. Well done to them all! Fantastic work!



Spring Term 2025

Term Time:

Tuesday 7 January to Friday 14 February

Half Term:

Monday 17 February to Friday 21 February

Term Time:

Monday 24 February to Friday 11 April

Friday 11 April—School Closes Early

Early Closure Times: Lower School 12.45pm - Upper School 1.15pm

